

Stressed Skin Cassettes

Location: Noble Park, VIC
 Supplier: Complete Frames
 Builder: Level 10
 Products: Stressed Skin "Qikpanel" floor systems for 64 unit development
 Other: Detailing by Meyer Timber NSW, assembly by TBS, pre-cut ducting/plumbing holes



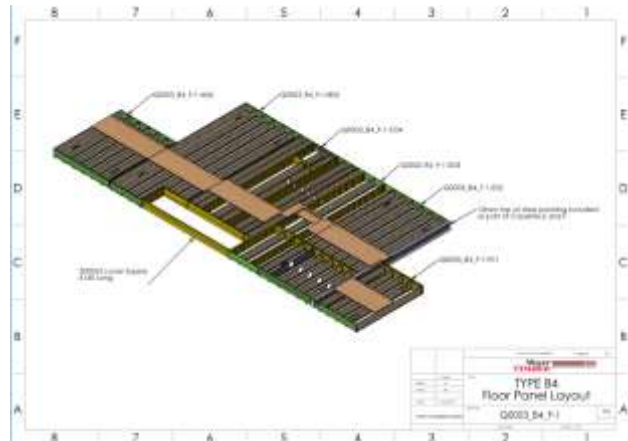
2 units ready for delivery



Steel beams – no worries.



Stair void built into design



3D assembly drawing

Less than half way through the project it is 2 weeks ahead of schedule already.