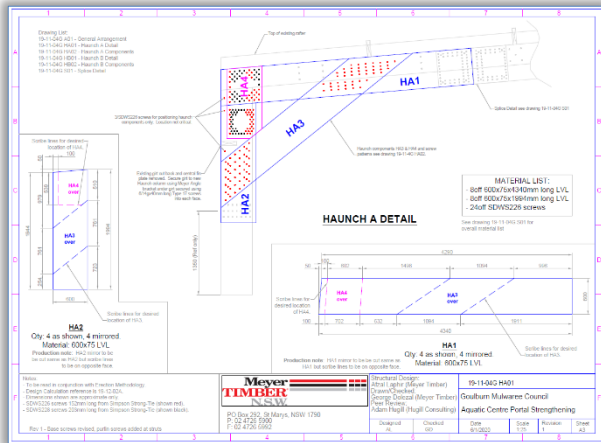
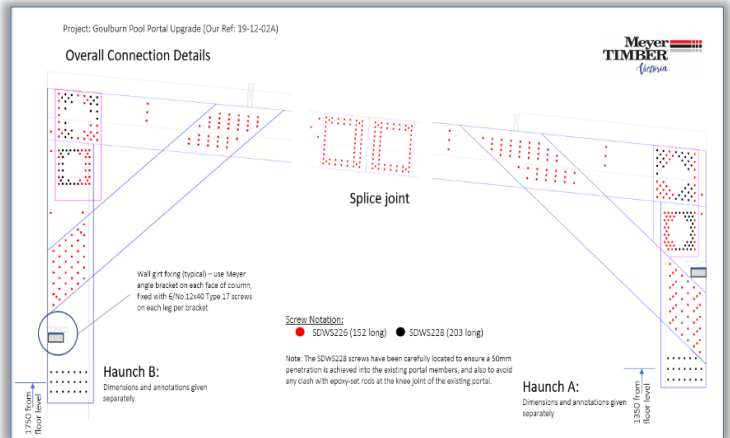


## Goulburn Aquatic Centre – Failed Portal Upgrade

Location: Goulburn, NSW  
 Supplier: Trussco  
 Design: Meyer Timber (structural engineering)  
 Builder: ARW Multigroup  
 Products: 600x75 hySPAN LVL portal, Simpson Strong-tie SDWS screws.  
 Other: Detailing, cut to size components and screw pattern marked by Meyer Timber



Production drawing



Details of haunches and splice



*“Meyer Timber comes to the fore at the hour of need. The pre-fabrication made assembly of these large sections so simple.”*