

Henley Townhouses, Kalkallo

Location: Kalkallo, Victoria
 Client: Henley Homes
 Architect: Henley Arch
 Products: Panelised Walls, Floor and Roof cassettes, Prefabricated staircases
 Manufacturer : Timber Building Systems (TBS)
 Structural Design: Meyer Timber

For more information:

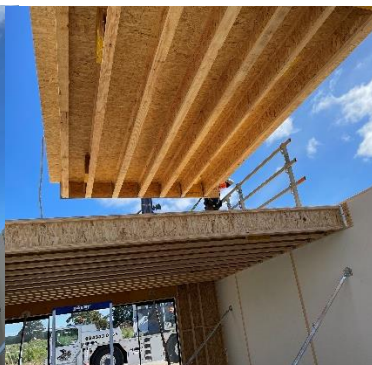
- [TBS WEBSITE](#)
- [BUILT OFFSITE ARTICLE](#)



Aerial view of the site under construction



The Front-End Modules (FEM) in the factory and being lifted into place on site (right)



Floor cassettes being installed and roof cassettes in place(right)

The Arch Feature puts the icing on the cake



Expected Finished Product

The panels were transported to site by 30 well-orchestrated trucks, and installed to lock up stage in just 10 days