

# IMPORTANT INFORMATION



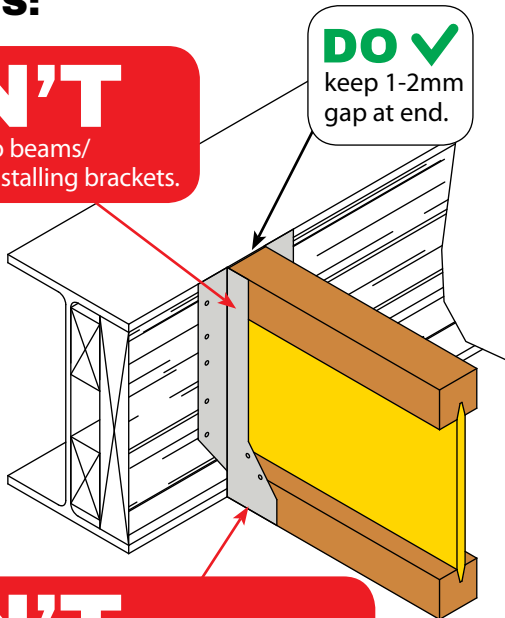
## POINTS TO MINIMISE THE POTENTIAL OF FLOOR SQUEAKS

### BRACKETS:

**DON'T**

skew nail joists to beams/packers before installing brackets.

**DO ✓**  
keep 1-2mm gap at end.



**DON'T**

have a gap between joist and bottom of bracket. A 6x30mm long wafer head screw is recommended from underneath to pull joist down.

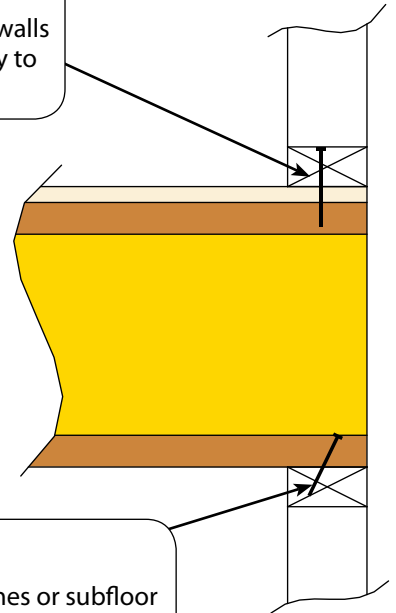
### FIXING:

**DO ✓**

fix **internal** and **external** walls above to joists adequately to prevent movement.

**DO ✓**

secure joists to lower frames or subfloor adequately to prevent movement.



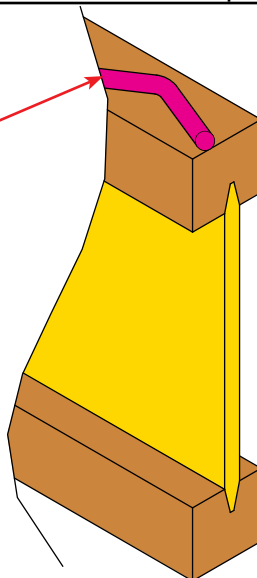
### FLOORING:

**DON'T**

use adhesive sparingly or allow it to form a skin prior to flooring sheet installation.

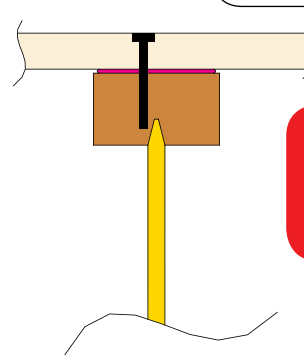
**DO ✓**

- Apply adhesive in accordance with adhesive manufacturers recommendations.
- Install flooring before adhesive forms a skin.
- Complete mechanical fixing of the sheet within the working time of the adhesive.
- Follow the flooring manufacturers recommendations relating to gluing of sheet grooves.



**DO ✓**

use correct fasteners (consult flooring documentation). Screws or ring shank nails are highly recommended.



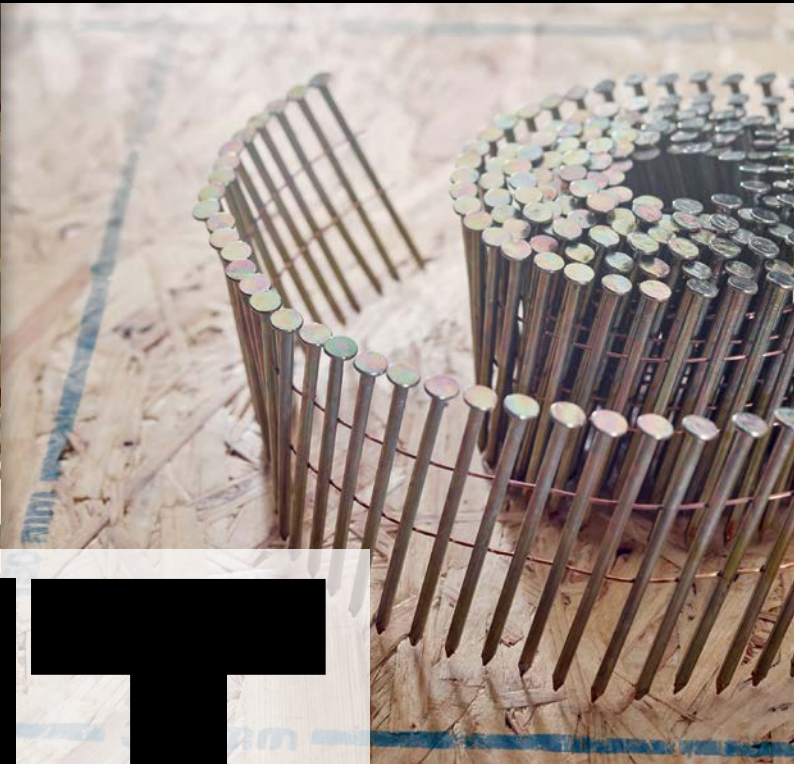
**DON'T**

miss joists with fasteners so they rub against the side of the joist.

For more information on meyJOIST refer to Installation reference sheet or product manual. Also refer to relevant flooring, bracket, and fastener documentation as required.

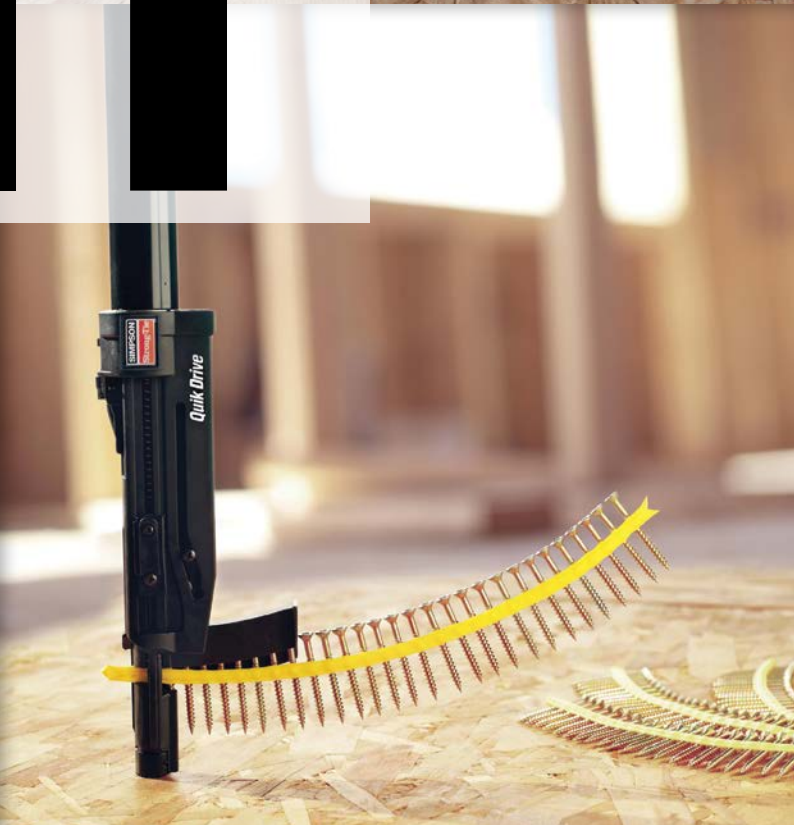


**GREAT PRODUCTS & GOOD PRACTICE  
MEANS LESS NOISE**



**STAND  
LAY  
STICK  
FIX**

**T**



**Meyer**   
**TIMBER**®

**Meyer**   
**TIMBER**  
*Victoria*

**Meyer**   
**TIMBER**  
*New South Wales*

**Meyer**   
**TIMBER**  
*Queensland*

**Meyer**   
**TIMBER**  
*Tasmania*

[www.meyertimber.com.au](http://www.meyertimber.com.au)